

# Diaphragm type pressure gauge

## Model SDS

Nominal size 100 mm or 150 mm

Accuracy: Class 1.6 (1.6%)

### Features

- Stainless steel construction
- Suitable for corrosive environments
- Protection IP54
- Usable to full scale
- Overload protection 130%

### Ranges

-25 ... 0 mbar up to 0 ... 10 kg/cm<sup>2</sup>

-250 ... 0 mmWC up to 0 ... 150 psi

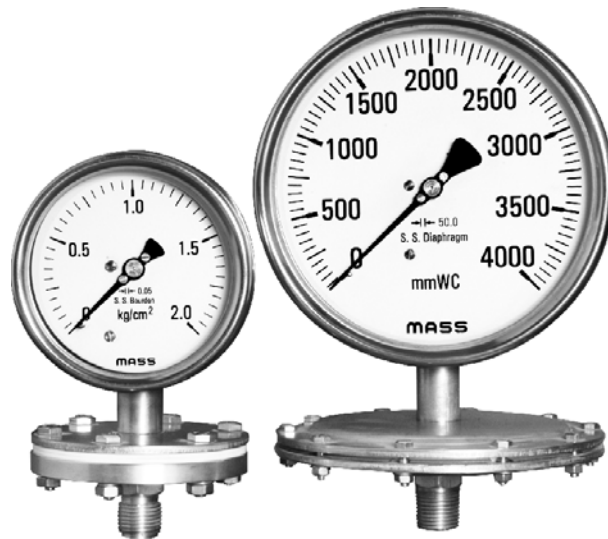
### Applications

Chemical and petrochemical industry

Machine and apparatus construction

Food and beverage industry

Pulp and paper industry

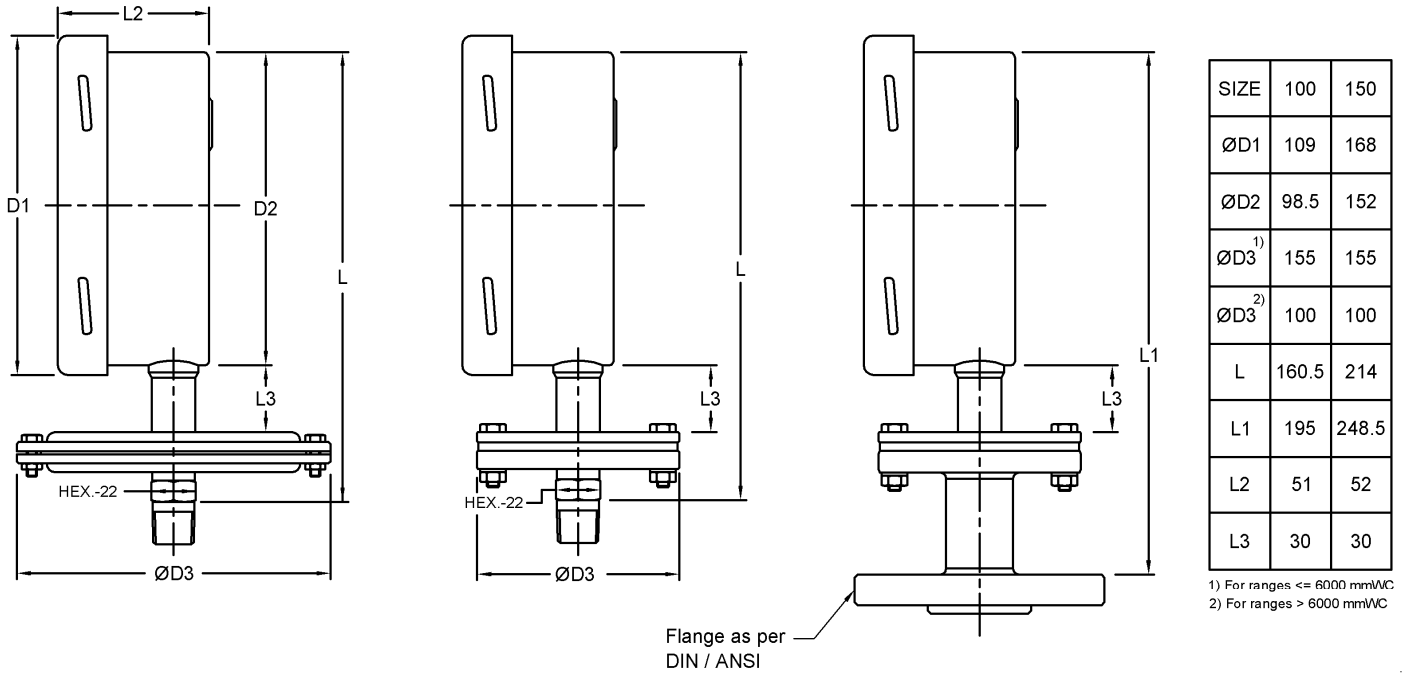


Technical specification	SDS	
Dial size [mm]	100	150
Construction	Open front cylindrical case, optional with blow out disc at the back	
Measuring principle	Horizontal diaphragm	
Range [mmwc] [kg/cm <sup>2</sup> ]	250 400 600 1000 1600 2500 4000 -250/0 -400/0 -600/0 -1000/0 -1600/0 -2500/0 -4000/0 0,6 1,0 1,6 2,5 4 6 10 -1/0 -1/0,6 -1/1,5 -1/3 -1/5 -1/9	
Overpressure limit	130 % F.S., short time.	
Pressure type	Gauge, vacuum and compound	
Process connection	1/4" 3/8" 1/2" BSP / NPT (M), M20x1.5(M) Direct flange as per DIN/ANSI Others on request	
Connection location	Lower	
Material	Process connection: Stainless steel 316 optional PTFE lined Diaphragm: Stainless steel 316L optional PTFE protected Case/bayonet ring: Stainless steel 304 optional 316L Window: Instrument glass optional laminated safety glass Dial: Aluminum, black markings on white background Pointer: Aluminum, black, optional micrometer adjustment Movement: Stainless steel 304	
Accuracy	Class 1.6 (1.6 % F.S.)	
Permissible	Ambient temperature: -25 ... 50 °C Medium temperature: Max. 100 °C Storage temperature: -40 ... 60 °C Effect: Max. 0,5 % / 10 K	
Protection according	IP54	
Mounting	Standard stem or flange	
Weight ≤ 400 mbar / > 400 mbar [kg]		
Accessories, options	Valves, electric contacts, dampener, gauge saver etc	

All specifications are subject to change without notice.

IN.SDS Rev. F 21/02/2011

### General dimensions in mm



### Order information

Size	Type	System material	Process connection	Rating	Facing	Range	Engineering units	Blow out/case material	Options																																																																																		
(100) 100 mm	SDS	(S) Diaphragm 316L, flange 316  (SP) Diaphragm 316L & flange 316, PTFE protected	(04) 1/2" NPT (M)	(NA)	(T)	-250/ 0	(mmWC)	(=) Standard without blowout	(NH) Tagging wired																																																																																		
(150) 150 mm			(03) 3/8" NPT (M) <sup>2)</sup>			(02) 1/4" NPT (M) <sup>2)</sup>				(05) 1/2" BSP (M)	(15) 1/2" BSP (M)	(14) 3/8" BSP (M) <sup>2)</sup>	(13) 1/4" BSP (M) <sup>2)</sup>	(16) M20x1.5 (M)	(17) 1/2" BSP (M)	(18) 3/8" BSP (M) <sup>2)</sup>	(19) 1/4" BSP (M) <sup>2)</sup>	(20) M20x1.5 (M)	(21) 1/2" BSP (M)	(22) 3/8" BSP (M) <sup>2)</sup>	(23) 1/4" BSP (M) <sup>2)</sup>	(24) M20x1.5 (M)	(25) 1/2" BSP (M)	(26) 3/8" BSP (M) <sup>2)</sup>	(27) 1/4" BSP (M) <sup>2)</sup>	(28) M20x1.5 (M)	(29) 1/2" BSP (M)	(30) 3/8" BSP (M) <sup>2)</sup>	(31) 1/4" BSP (M) <sup>2)</sup>	(32) M20x1.5 (M)	(33) 1/2" BSP (M)	(34) 3/8" BSP (M) <sup>2)</sup>	(35) 1/4" BSP (M) <sup>2)</sup>	(36) M20x1.5 (M)	(37) 1/2" BSP (M)	(38) 3/8" BSP (M) <sup>2)</sup>	(39) 1/4" BSP (M) <sup>2)</sup>	(40) M20x1.5 (M)	(41) 1/2" BSP (M)	(42) 3/8" BSP (M) <sup>2)</sup>	(43) 1/4" BSP (M) <sup>2)</sup>	(44) M20x1.5 (M)	(45) 1/2" BSP (M)	(46) 3/8" BSP (M) <sup>2)</sup>	(47) 1/4" BSP (M) <sup>2)</sup>	(48) M20x1.5 (M)	(49) 1/2" BSP (M)	(50) 3/8" BSP (M) <sup>2)</sup>	(51) 1/4" BSP (M) <sup>2)</sup>	(52) M20x1.5 (M)	(53) 1/2" BSP (M)	(54) 3/8" BSP (M) <sup>2)</sup>	(55) 1/4" BSP (M) <sup>2)</sup>	(56) M20x1.5 (M)	(57) 1/2" BSP (M)	(58) 3/8" BSP (M) <sup>2)</sup>	(59) 1/4" BSP (M) <sup>2)</sup>	(60) M20x1.5 (M)	(61) 1/2" BSP (M)	(62) 3/8" BSP (M) <sup>2)</sup>	(63) 1/4" BSP (M) <sup>2)</sup>	(64) M20x1.5 (M)	(65) 1/2" BSP (M)	(66) 3/8" BSP (M) <sup>2)</sup>	(67) 1/4" BSP (M) <sup>2)</sup>	(68) M20x1.5 (M)	(69) 1/2" BSP (M)	(70) 3/8" BSP (M) <sup>2)</sup>	(71) 1/4" BSP (M) <sup>2)</sup>	(72) M20x1.5 (M)	(73) 1/2" BSP (M)	(74) 3/8" BSP (M) <sup>2)</sup>	(75) 1/4" BSP (M) <sup>2)</sup>	(76) M20x1.5 (M)	(77) 1/2" BSP (M)	(78) 3/8" BSP (M) <sup>2)</sup>	(79) 1/4" BSP (M) <sup>2)</sup>	(80) M20x1.5 (M)	(81) 1/2" BSP (M)	(82) 3/8" BSP (M) <sup>2)</sup>	(83) 1/4" BSP (M) <sup>2)</sup>	(84) M20x1.5 (M)	(85) 1/2" BSP (M)	(86) 3/8" BSP (M) <sup>2)</sup>	(87) 1/4" BSP (M) <sup>2)</sup>	(88) M20x1.5 (M)	(89) 1/2" BSP (M)	(90) 3/8" BSP (M) <sup>2)</sup>	(91) 1/4" BSP (M) <sup>2)</sup>	(92) M20x1.5 (M)	(93) 1/2" BSP (M)
			ANSI Flanged	(150) 150 lbs	(FF) Flat face <sup>1)</sup> (RF) Raised face <sup>1)</sup>	0/ 250 0/ 400 0/ 600 0/ 1000 0/ 1600 0/ 2500 0/ 4000	(kg/cm <sup>2</sup> )	(YB) Blow out disc  (YW) Case material 316L (1.4404)  (EC) Contact type and function (see EC.1)	(CS) Dual scale  (OF) Oil free  (MP) Micrometer pointer  (SG) Safety glass  (DA) Dial marking  (MS) Case and top flange Steel, powder coated																																																																																		
			(05) 1/2"	(300) 300 lbs		-1/ 0 -1/ 1.5 -1/ 3 -1/ 5 -1/ 9 -1/ 15																																																																																					
			DIN Flanged	(PN10)		0/ 0,6 0/ 1 0/ 1,6 0/ 2,5 0/ 4 0/ 6 0/ 10																																																																																					
			(DN15)	(PN16)																																																																																							
			(DN25)	(PN25)																																																																																							
			(DN40)																																																																																								
			(DN50)																																																																																								

psi and others on request

1) The DIN-flange facing depends on nominal size and nominal pressure 2) Not for system material (SP)

### How to order

Size	Type	System material	Process connection	Rating	Facing	Range	Engineering unit	Filling/Case material	Option
100	SDS	S	04	NA	T	0/10	KG/CM2	=	NH

### Ashcroft India Pvt. Ltd.

Plot No.: 2306, G.I.D.C. Chhatral, Ta: Kalol, Dist.: Gandhinagar,  
CHHATRAL 382 729, Gujarat, INDIA.  
Telephone: +91 (0) 2764 233681/82/83 Fax: +91-2764-233440  
Email: sales@ashcroftindia.com www.ashcroftindia.com

- North Zone : sales.delhi@ashcroftindia.com
- East zone : sales.kolkata@ashcroftindia.com
- West zone : sales.mumbai@ashcroftindia.com
- South zone : sales.chennai@ashcroftindia.com